



Cadherin-20 Polyclonal Antibody

Catalog No	YP-Ab-16930
Isotype	IgG
Reactivity	Human;Mouse;Rat
Applications	IHC;IF;ELISA
Gene Name	CDH20
Protein Name	Cadherin-20
Immunogen	The antiserum was produced against synthesized peptide derived from human CDH20. AA range:111-160
Specificity	Cadherin-20 Polyclonal Antibody detects endogenous levels of Cadherin-20 protein.
Formulation	Liquid in PBS containing 50% glycerol, 0.5% BSA and 0.02% sodium azide.
Source	Polyclonal, Rabbit,IgG
Purification	The antibody was affinity-purified from rabbit antiserum by affinity-chromatography using epitope-specific immunogen.
Dilution	Immunohistochemistry: 1/100 - 1/300. Immunofluorescence: 1/200 - 1/1000. ELISA: 1/10000. Not yet tested in other applications.
Concentration	1 mg/ml
Purity	≥90%
Storage Stability	-20°C/1 year
Synonyms	CDH20; CDH7L3; Cadherin-20
Observed Band	
Cell Pathway	Cell membrane; Single-pass type I membrane protein.
Tissue Specificity	Expressed in placenta, adult brain, and fetal brain.
Function	function:Cadherins are calcium dependent cell adhesion proteins.,function:Cadherins are calcium dependent cell adhesion proteins. They preferentially interact with themselves in a homophilic manner in connecting cells; cadherins may thus contribute to the sorting of heterogeneous cell types.,similarity:Contains 5 cadherin domains.,tissue specificity:Expressed in placenta, adult brain, and fetal brain.,
Background	This gene is a type II classical cadherin from the cadherin superfamily and one of three cadherin 7-like genes located in a cluster on chromosome 18. The encoded membrane protein is a calcium dependent cell-cell adhesion glycoprotein comprised of five extracellular cadherin repeats, a transmembrane region and a highly conserved cytoplasmic tail. Type II (atypical) cadherins are defined based on their lack of a HAV cell adhesion recognition sequence specific to type I cadherins. Since disturbance of intracellular adhesion is a prerequisite for invasion and metastasis of tumor cells, cadherins are considered prime



candidates for tumor suppressor genes. [provided by RefSeq, Jul 2008],

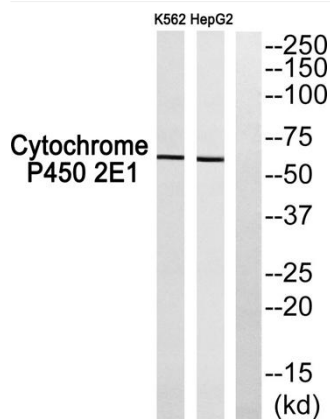
matters needing attention

Avoid repeated freezing and thawing!

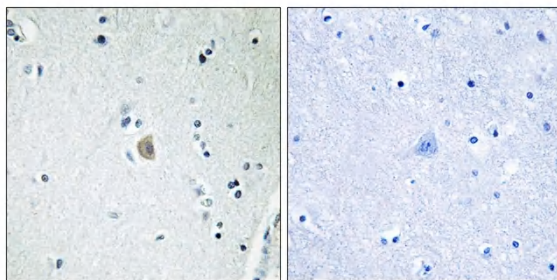
Usage suggestions

This product can be used in immunological reaction related experiments. For more information, please consult technical personnel.

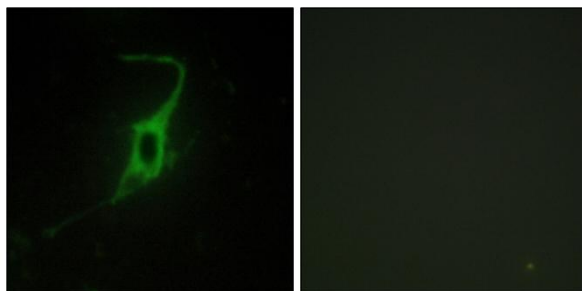
Products Images



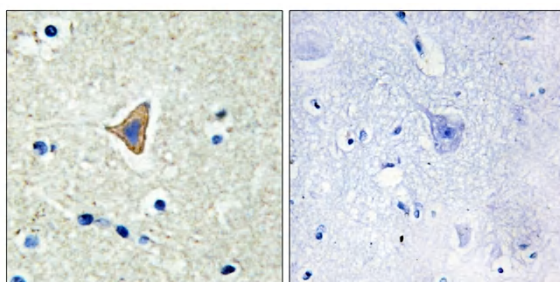
Western blot analysis of CDH20 Antibody. The lane on the right is blocked with the CDH20 peptide.



Immunohistochemistry analysis of paraffin-embedded human brain, using CDH20 Antibody. The lane on the right is blocked with the CDH20 peptide.



Immunofluorescence analysis of NIH/3T3 cells, using CDH20 Antibody. The picture on the right is blocked with the synthesized peptide.



Immunohistochemistry analysis of paraffin-embedded human brain tissue, using CDH20 Antibody. The picture on the right is blocked with the synthesized peptide.